

SOCIAL GROUP REPRESENTATION

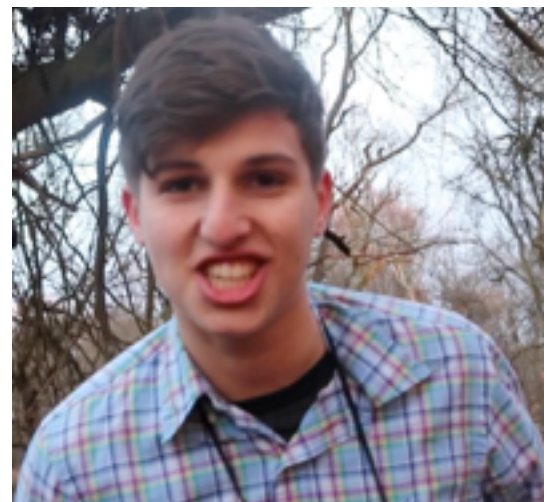
When I was editing my finished project, I realised that I had sub-consciously been effected by other horror/comedies, which affected my decisions, of the script, actors and props being used. A film I watched before making my film was "Zombieland".

I realised that there were similarities between my main character and the main character from 'Zombieland'.



On the left is a picture of 'Jesse Isenburg' in the film "Zombieland". He plays the character of 'Columbus'. He is portrayed as quite a nerdy character, who is smart and clearly not great with the ladies, however he becomes the unlikely hero who saves the day.

On the right is my main character 'Samuel Cleetz', played by Kasim Khan. Samuel, is portrayed the same way as 'Columbus', in the fact that he clearly has a nerdy persona as he enjoys going bird watching, and again isn't very good with the ladies as he is infatuated with birds and only birds.



Similarities of characters

Differences of characters

Nerdy and not very brave

Samuel is younger as is only 18, whereas Columbus is around 24.

takes no pride in personal appearance or hygiene

Columbus eventually gets the girl by being brave, whereas in Samuels case, there are no girls to get

Young in age, but fairly mature